



## TEST BENCH DYNAMICS



The test bench is designed for dynamic tests of personal protective equipment of filter type in order to determine the protection time for gaseous harmful and dangerous substances.

Dynamics test bench meets the requirements of the following standards:  
EN 14387:2008, EN 12941:1998,  
EN 405:2001+A1:2009,  
GOST 12.4.285-2015,  
GOST EN 1827-2012,  
GOST EN 12942-2012.

«SECOND BREATH» LLC  
[second-breath.net](http://second-breath.net)  
[mail@second-breath.net](mailto:mail@second-breath.net)  
+7 (999) 621-97-77



	AX
	B
	E
	K
	NO



## AUTOMATION

- ▶ High level of automation. All control is performed using laptop and touch-screen.
- ▶ Recording of all required test parameters in a database for subsequent analysis Automatic.



## MOBILITY

- ▶ Test bench mobility is determined by its unrivalled weight-size parameters.



## COST-EFFECTIVENESS

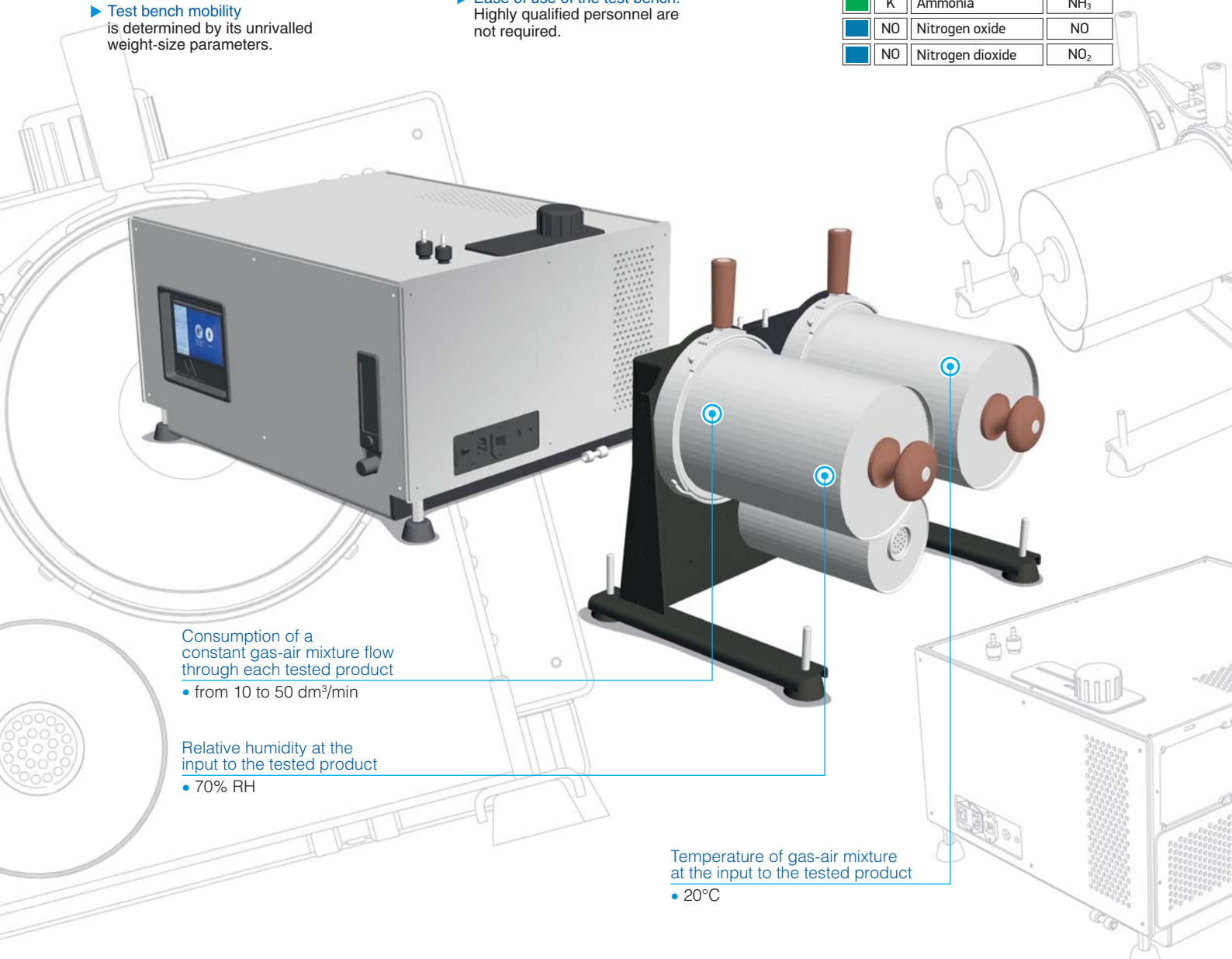
- ▶ Low cost of ownership, scheduled service, modular replacement of the spare parts. The test bench automatically reports its malfunctions and scheduled work, thus downtime is significantly reduced.
- ▶ Autonomous operation doesn't require permanent presence of a person. Saves operator working time.
- ▶ Ease of use of the test bench. Highly qualified personnel are not required.



## VERSATILITY

- ▶ Possibility to perform tests on 8 test substances:

AX	Dimethyl ether	$\text{CH}_3\text{OCH}_3$
AX	Isobutane	$\text{C}_4\text{H}_{10}$
B	Chlorine	$\text{Cl}_2$
B	Hydrogen sulphide	$\text{H}_2\text{S}$
E	Sulphur dioxide	$\text{SO}_2$
K	Ammonia	$\text{NH}_3$
NO	Nitrogen oxide	$\text{NO}$
NO	Nitrogen dioxide	$\text{NO}_2$



Consumption of a constant gas-air mixture flow through each tested product

- from 10 to 50 dm<sup>3</sup>/min

Relative humidity at the input to the tested product

- 70% RH

Temperature of gas-air mixture at the input to the tested product

- 20°C

### Dimensions

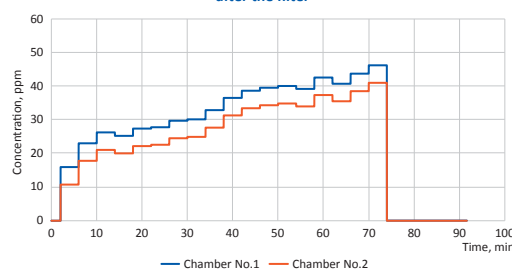
- height: 365 mm
- width: 480 mm
- length: 590 mm

Weight no more than 30 kg

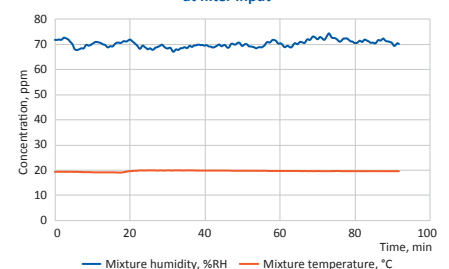
Power supply 220 V 50 Hz

Power consumption no more than 3 kW

Tests on the Dynamics test bench  
Test substance concentration (isobutane)  
after the filter



Tests on the Dynamics test bench  
Temperature and humidity of gas-vapour mixtures  
at filter input



## FIELDS OF APPLICATION



Research institutes and universities



Developers and manufacturers of the RPE



Certification centers and laboratories